

# LOCTrailing Expert Advisor user's manual.

## Contents

|   |    |
|---|----|
| <i>LOCTrailing Expert Advisor user's manual</i> .....     | 1  |
| <i>Contents</i> .....                                     | 1  |
| <i>Overview</i> .....                                     | 1  |
| <i>Features</i> .....                                     | 1  |
| <i>Input parameters with default values:</i> .....        | 2  |
| <i>Global Parameters</i> .....                            | 3  |
| <i>Breakeven Parameters</i> .....                         | 5  |
| <i>Trailing Stop Loss Parameters</i> .....                | 6  |
| <i>Simple trailing (_trailingMethod=1)</i> .....          | 8  |
| <i>Parabolic trailing (_trailingMethod=2)</i> .....       | 8  |
| <i>ATRStop trailing (_trailingMethod=3)</i> .....         | 9  |
| <i>X Bars Back trailing (_trailingMethod=4)</i> .....     | 9  |
| <i>Fractal based trailing (_trailingMethod=5)</i> .....   | 10 |
| <i>Bollinger Bands trailing (_trailingMethod=6)</i> ..... | 10 |
| <i>Approaching trailing (_trailingMethod=7)</i> .....     | 11 |
| <i>Kijun-sen trailing (_trailingMethod=8)</i> .....       | 11 |
| <i>Percent trailing (_trailingMethod=10)</i> .....        | 12 |
| <i>Use cases</i> .....                                    | 12 |
| <i>Help, Support &amp; Questions</i> .....                | 13 |
| <i>We wish you big profits!</i> .....                     | 13 |

## Overview

LOCTrailing is an expert advisor (EA) for Metatrader 4 (MT) platform.  
More info in this manual and on our site <http://www.landofcash.net>

## Features

1. 9 trailing algorithms – Simple , Parabolic, ATRStop, X bars back, Fractal, Bollinger Bands, Approaching, Kijun-se, Percent
2. Breakeven Functionality
3. Live visual info about orders the EA is tracking
4. Customizable input parameters of the indicators used.

5. *Tracking orders by comment*
6. *Tracking orders by magic number, exclude orders with a specified magic number*
7. *Works on any timeframe and any pair.*
8. *Works on 4 digit and 5 digit accounts.*
9. *Can start trail in profit area only or immediately after order is placed.*
10. *Can set order Stop loss and Take profit to the predefined levels when an order is placed*

With LOCTrailing EA you will forget about moving your stop loss level manually. EA can set a Stop Loss value in a breakeven after the price goes in your favor. Also you can specify one of built in algorithms the EA will use to trail your orders. You can run as many EAs on the same pair and specify the orders EA will track by setting order comment. EA can also modify the order after it was placed and set the Stop loss and Take profit to the predefined values.

### Input parameters with default values:

- `string PIPSMultiplierComment="--- SET 10 on 5 digit account OR 1 on 4 digit account. ---";`
- `int _pipsMultiplier=10;`
- `string _orderCommentToTrack="";`
- `string _orderMagicToTrack="";`
- `string StopLossTrailingComment="--- Trailing and Breakeven settings ---";`
- `string EnableBreakevenComment="--- Set to true to enable Breakeven. ---";`
- `bool _enableBreakeven = true;`
- `int _profitWhenToSetNoLossStopPips=55;`
- `int _profitOfNoLossStopPips=1;`
- `string TrailingLoss="--- FALSE to move SL only in profit, TRUE to move SL in profit or loss ---";`
- `bool _trailingLoss = false;`
- `string TrailingMethodComment="--- 0- No Trailing, 1-Simple, 2 - Parabolic SAR, 3 - ATRStop, 4 - X bars back, 5 - Fractal 6- bollinger bands 7 - Approaching 8 - Kijunsen 9 - Percent---";`
- `int _trailingMethod=1;`
- `int _simpleSLTrailingInitialStartPips=100;`
- `int _simpleSLTrailingPips=55;`
- `double _parabolicStep=0.02;`
- `double _parabolicMaximum=0.2;`
- `int _ATRStopTimeFrameMin=0;`
- `int _ATRStopPeriod=12;`
- `int _XBarsBarsBack=24;`
- `int _XBarsBarsAdditionPips=10;`
- `int _fractalAdditionPips=10;`
- `int _BBPeriod=24;`
- `int _BBDeviations=2;`
- `string BBApplyToComment="--- 0 - Close, 1 - Open, 2 - High, 3 - Low, 4 - Median, 5 - Typical, 6 - Weighted ---";`
- `int _BBApplyTo=0;`
- `int _approachingStartSLPips=100;`
- `int _approachingEndSLPips=15;`
- `int _approachingPriceStepPips=10;`
- `int _approachingSLStepPips=5;`
- `int _kijunsenPeriod=61;`
- `int _kijunsenAdditionPips=0;`
- `double _percentSLPercent=50;`
- `int _percentMinFixedProfitPips=20;`
- `int _stopLossInitialPips = 0;`
- `int _takeProfitInitialPips = 0;`
- `string ColorSchemeComment="--- 1-For Dark, 2-For Light background---";`
- `int _colorScheme=1;`
- `bool _demoMode=false;`

Parameters which are ended with the word “Comment” are just to describe the meaning and possible values of the parameter below it.

For example:

*PIPSMultiplierComment says that you need to set the parameter below (\_pipsMultiplier) to 10 on 5 digit account and 1 on 4 digit account.*

There are 3 groups of parameters.

- A. Global
- B. Breakeven settings
- C. Trailing settings

## Global Parameters

Global Parameters affect the behavior of EA and orders it will track.

Here are the global parameters with a brief description.

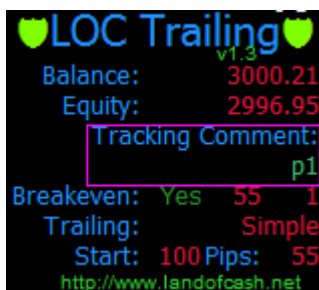
### **`_pipsMultiplayer = 10`**

The only valid values for this parameter are 1 or 10. Set it to 1 if you trade on 4 digit account or set it to 10 if you trade on 5 digit account. (If you are not sure which account you are on just look at EURUSD price. If it says something like 1.40212 then you are on 5 digits account. On the 4 digit account it will look like 1.4021. Five digits after decimal point on 5 digits account and only four digits on 4 digit account.)

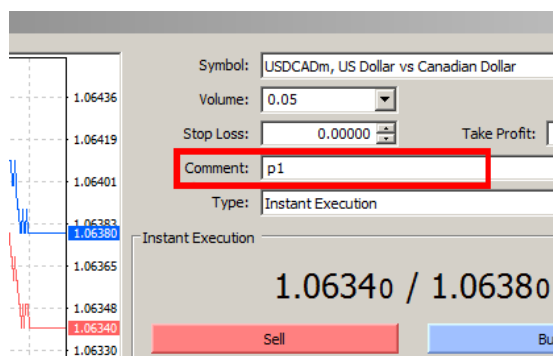
### **`_orderCommentToTrack = ""`**

Allows you to specify which orders EA should work with. By default this parameter is empty and it means that EA will track all orders of the pair it is attached on. If you want the EA to track only specific orders you need to set a comment to the order when you open it and set this parameter the same.

For example: *You want to EA to track orders only with a comment "p1".  
Set the `_orderCommentToTrack = "p1"` and you should see it on chart:*



*Now all orders with a comment "p1" on the current Pair are tracked by EA.  
When you open an order don't forget to set the comment to make EA see it and track.*



Setting this may be useful when you also run other EAs on the same pair and don't want the LOC Trailing EA to interfere with orders set by other expert advisors.

## **`_orderMagicToTrack=""`**

This setting allows you to specify magic numbers that EA will monitor or ignore. By default this parameter is empty and EA will track all orders on the pair. You can specify a list of magic numbers to make EA trail only orders marked with these magic numbers. Also you can specify a list of exclude magic numbers to make EA ignore orders marked with them.



*For Example:*

*You want to track only orders marked with magic numbers 777 and 778 .*

*In this case you need to set the `_orderMagicToTrack` parameter to this: `"777;778"`*

*Another example.*

*You want EA to ignore orders marked with a comment 777 and 778*

*In this case you need to set the `_orderMagicToTrack` parameter to this: `"*777;*778"`*

A start sign before the number makes EA to exclude orders marked with this magic number.

## **`_trailInLoss=false`**

By default (`_trailInLoss=false`) EA moves Stop Loss only in profit. To make EA move SL also in loss set `_trailInLoss = true`. This is useful if you want EA to start trail immediately after an order was opened. Use wisely with `_trailInLoss = true!!!`

## **`_colorScheme = 1`**

By default EA uses "Light on Dark" background colors. Good for dark backgrounds. Set to `_colorScheme = 2` if your chart background color is light e.g. white.



### **`_stopLossInitialPips = 0`**

This parameter allows you to specify the stop loss of the order in pips that will be set after an order is opened. EA will only set stop loss for orders without initial stop loss specified. EA will modify an order right after it was opened and set its stop loss according to `_stopLossInitialPips` value. If you don't want the EA to modify the order leave the `_stopLossInitialPips = 0`

### **`_takeProfitInitialPips = 0`**

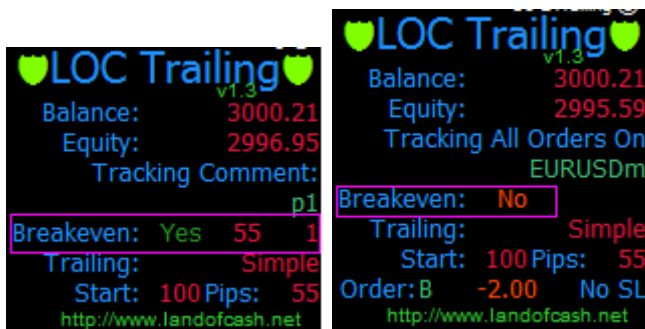
This parameter allows you to specify the take profit of the order in pips that will be set after an order is opened. EA will only set take profit for orders without initial take profit specified. EA will modify an order right after it was opened and set its take profit according to `_takeProfitInitialPips` value. If you don't want the EA to modify the order leave the `_takeProfitInitialPips = 0`

## **Breakeven Parameters**

Breakeven parameters allows you to enable breakeven functionality and the pips values when and where to set the Stop Loss after the price goes in your favor.

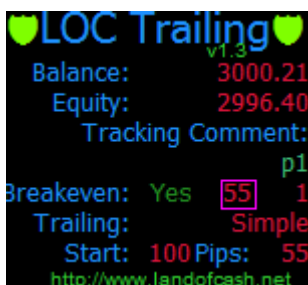
### **`_enableBreakeven = true/false`**

Set this parameter to true to enable breakeven Set to false when you don't need breakeven functionality.



### **`_profitWhenToSetNoLossStopPips = 55`**

This parameter allows you to specify pips of profit when EA will move stop loss in a breakeven. For example if the price goes in your favor more than 55 pips EA will set a Stop loss in breakeven.



### **`_profitOfNoLossStopPips = 1`**

This parameter allows you to specify where to move the stop loss when the breakeven is triggered.



For example with default settings:

`_profitWhenToSetNoLossStopPips=55`

`_profitOfNoLossStopPips = 1`

EA will set Stop Loss in 1 pip profit when the price moves 55 pips in profit.

E.g. you bought EURUSD at 1.4000 when price hit 1.4055 (+55 pips) EA will set SL at 1.4001 (+1 pip)

NOTE: `_profitWhenToSetNoLossStopPips` MUST be greater than `_profitOfNoLossStopPips` on about 5~10 pips depending on your broker policy for the pair.

## Trailing Stop Loss Parameters

Trailing stop loss parameters allows you to set the trailing method you want the EA to trail order stop loss with. And different properties of the indicators used for stop loss trailing.

### `_trailingMethod=1`

Possible values are 0-No trailing, 1- simple trailing, 2-Parabolic trailing, 3-ATRStop trailing, 4 - X Bars Back trailing, 5 - fractal based trailing, 6 – Bollinger Bands trailing, 7- Approaching, 8 – Kijunsen trailing  
Allows you to set the trailing method the EA will use.

You can disable trailing setting `_trailingMethod=0`





**Simple trailing** (`_trailingMethod=1`) is the same as built in MT4 but it allows you to set profit when to start trailing.

**Parabolic trailing** (`_trailingMethod=2`) uses Parabolic SAR MT4 (visit [http://ta.mql4.com/en/indicators/trends/parabolic\\_sar](http://ta.mql4.com/en/indicators/trends/parabolic_sar) for more info) built in indicator to move the stop loss value. You can set parabolic parameters with `_parabolicStep` and `_parabolicMaximum`

**ATRStop trailing** (`_trailingMethod=3`) uses ATRStop custom indicator (it goes with LOC Trailing EA for free. File must be in experts/indicators/ folder and named ATRStop.ex4). You can set the Timeframe ATRStop Indicator is calculated on (`_ATRStopTimeFrameMin`) and ATRStop period (`_ATRStopPeriod`)

**X Bars Back trailing** (`_trailingMethod=4`) for long (buy) position EA calculates the minimum low of X bars back from current bar (`_XBarsBarsBack`) and subtracts specified number of pips from the found minimum (`_XBarsBarsAdditionPips`)  
for short (sell) position EA calculates the maximum high of X bars back from current bar (`_XBarsBarsBack`) and adds specified number of pips to the found minimum (`_XBarsBarsAdditionPips`)

**Fractal based trailing** (`_trailingMethod=5`) uses fractal indicator (visit <http://ta.mql4.com/indicators/bills/fractal> for more info) to move stop loss value. You can set the stop loss distance (`_fractalAdditionPips`) from fractal in pips to prevent unexpected “pikes”.

**Bollinger Bands trailing** (`_trailingMethod=6`) uses Bollinger Bands indicator (visit [http://ta.mql4.com/indicators/trends/bollinger\\_bands](http://ta.mql4.com/indicators/trends/bollinger_bands) for more info) to move stop loss value. For short positions it uses top line for long positions it uses bottom line. To change the default Bollinger Bands indicator settings use these parameters: `_BBPeriod`, `_BBDeviations`, `_BBApplyTo`.

**Approaching trailing** (`_trailingMethod=7`) Changes the SL value depending on order profit. The bigger is order profit -- the closer stop loss is to the current market. Starting with `_approachingStartSLPips` when profit increases

by `_approachingPriceStepPips` the stop loss value decreases by `_approachingSLStepPips` until `_approachingEndSLPips` is reached.

**Kijun-sen trailing (`_trailingMethod=8`)** Uses Kijun-sen line of Ichimoku (visit [http://en.wikipedia.org/wiki/Ichimoku\\_Kink%C5%8D\\_Hy%C5%8D](http://en.wikipedia.org/wiki/Ichimoku_Kink%C5%8D_Hy%C5%8D) for more info) indicator to set stop loss. To change the default period use `_kijunsenPeriod` and `_kijunsenAdditionPips` is used to add additional pips to the line.

**Percent Trailing (`_trailingMethod=10`)** Trails using specified percent of profit. The stop loss is a % of the open minus high.

Watch video examples on YouTube LandOfCash channel at <http://www.youtube.com/user/landofcash>

### Simple trailing (`_trailingMethod=1`)

---

**`_simpleSLTrailInitialStartPips = 100`**

NOTE: only applies when `_trailingMethod=1` (simple trailing)

This parameter allows you to set when the simple trailing will start trailing orders. (Pips of profit)

**`_simpleSLTrailPips = 55`**

NOTE: only applies when `_trailingMethod=1` (simple trailing)

This parameter allows you to set the level of trailing stop.



For Example with default settings:

`_simpleSLTrailInitialStartPips = 100`

`_simpleSLTrailPips = 55`

EA will start trail an order after 100 pips of profit with a trail level of 55 pips.

### Parabolic trailing (`_trailingMethod=2`)

---

**`_parabolicStep=0.02`**

NOTE: only applies when `_trailingMethod=2` (parabolic trailing)

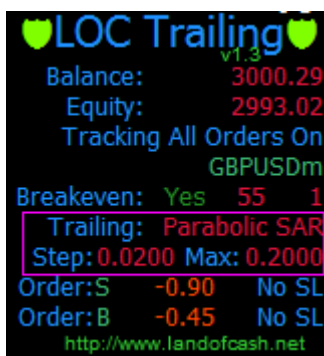
This parameter allows you to set the Step of the Parabolic SAR indicator used to trail.

**`_parabolicMaximum=0.2`**



NOTE: only applies when `_trailingMethod=2` (parabolic trailing)

This Parameter allows you to set the Maximum of the Parabolic SAR indicator used to trail.



### ***ATRStop trailing (`_trailingMethod=3`)***

---

#### **`_ATRStopTimeFrameMin=0`**

NOTE: only applies when `_trailingMethod=3` (ATRStop trailing)

This parameter allows you to set the Time Frame the ATRStop indicator will be calculated on. The default value 0 means that the current chart Time Frame will be used.

#### **`_ATRStopPeriod =12`**

NOTE: only applies when `_trailingMethod=3` (ATRStop trailing)

This parameter allows you to set the Period of the ATRStop indicator.



### ***X Bars Back trailing (`_trailingMethod=4`)***

---

#### **`_XBarsBarsBack = 24`**

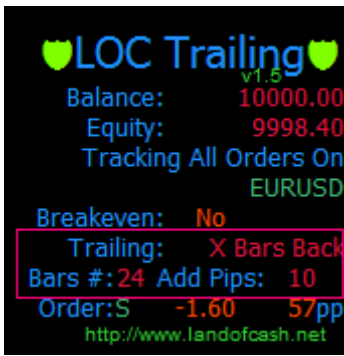
NOTE: only applies when `_trailingMethod=4` (X bars back trailing)

The number of bars back from current bar to calculate minimum/maximum

#### **`_XBarsBarsAdditionPips=10`**

NOTE: only applies when `_trailingMethod=4` (X bars back trailing)

The number of pips to add to the minimum/maximum of `_XBarsBarsBack`



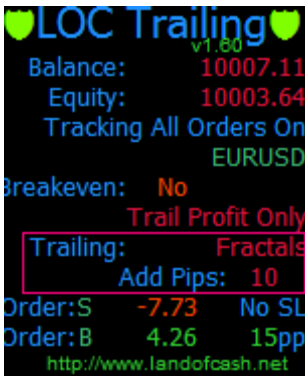
### Fractal based trailing (*\_trailingMethod=5*)

---

#### **\_fractalAdditionPips=10**

NOTE: only applies when *\_trailingMethod=5* (Fractal trailing)

The number of pips to add to the fractal to prevent unexpected false breaks of the fractal.



### Bollinger Bands trailing (*\_trailingMethod=6*)

---

#### **\_BBPeriod=24;**

NOTE: only applies when *\_trailingMethod=6* (Bollinger Bands trailing)

The period of Bollinger Bands indicator.

#### **\_BBDeviations=2**

NOTE: only applies when *\_trailingMethod=6* (Bollinger Bands trailing)

The Bollinger Bands indicator Deviations value.



#### **\_BBApplyTo=0**

NOTE: only applies when *\_trailingMethod=6* (Bollinger Bands trailing)

The price to calculate Bollinger Bands indicator.

Allowed values are: 0 - Close, 1 - Open, 2 - High, 3 - Low, 4 - Median, 5 - Typical, 6 - Weighted

## Approaching trailing (*\_trailingMethod=7*)

---

### **\_approachingStartSLPips=100**

NOTE: only applies when *\_trailingMethod=7* (Approaching trailing)

This parameter specifies the start value of stop loss in pips.

### **\_approachingEndSLPips=15**

NOTE: only applies when *\_trailingMethod=7* (Approaching trailing)

This parameter specifies the end value of stop loss in pips.

```
♥LOC Trailing♥
v1.90
Balance: 500.00
Equity: 506.27
Tracking All Orders On
EURUSD
Breakeven: No
Initial TP: No SL: 100
Trail Profit Only
Trailing: Approaching
Start Pips: 100
End Pips: 15
Price Step Pips: 10
SL Step Pips: 5
Order:S 6.27 100pp
http://www.landofcash.net
```

### **\_approachingPriceStepPips=10;**

NOTE: only applies when *\_trailingMethod=7* (Approaching trailing)

This is the price step when the SL should be decreased.

### **\_approachingSLStepPips=5;**

NOTE: only applies when *\_trailingMethod=7* (Approaching trailing)

This is the number of pips to decrease the stop loss value.

## Kijun-sen trailing (*\_trailingMethod=8*)

---

### **\_kijunsenPeriod=61**

NOTE: only applies when *\_trailingMethod=8* (Kijunsen trailing)

This Parameter allows changing the Kijun-sen line period.

```
♥LOC Trailing♥
v2.01
Balance: 5000.00
Equity: 5000.00
Tracking All Orders On
EURUSD
Breakeven: No
Trail Profit Only
Trailing: Kijunsen
Period: 61 Add Pips: 5
http://www.landofcash.net
```

### **\_kijunsenAdditionPips=0**

NOTE: only applies when *\_trailingMethod=8* (Kijunsen trailing)

This parameter is to specify the shift (in pips) where to place stop loss from the Kijunsen line.

## Percent trailing (`_trailingMethod=10`)

### `_percentSLPercent=50`

NOTE: only applies when `_trailingMethod=9` (Percent trailing)

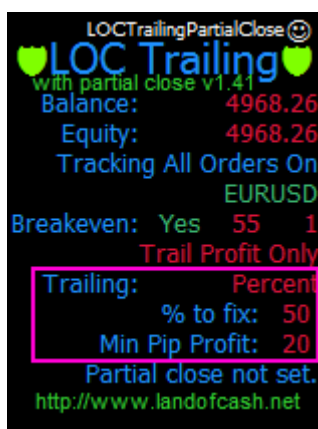
This parameter allows to specify the percent value of the stop loss. This parameter must be greater than 0 and less than 100;

*Example: Buy order. `_percentSLPercent` is set to 80%. Order goes in your favor for +100 pips the SL value will be at 80% or 80 pips profit (20 pips stop loss). If after that the order continues to grow and reach +200 pips SL will be set at +160 pips of profit (40 pips stop loss). And so on.*

### `_percentMinFixedProfitPips=20`

NOTE: only applies when `_trailingMethod=9` (Percent trailing)

The minimum profit to fix with stop loss. This parameter must be positive



## Use cases

**Task (simple trailing):** I want to track all orders with a simple trailing of 20 pips after order profit reaches 100 pips. Also I want to set SL in a breakeven when order profit is 10 pips. (5 digits account)

Parameters:

`_pipsMultiplier=10` We are on 5 digits account

`_orderCommentToTrack=""` we track all orders (empty)

`_enableBreakeven=true` We need breakeven functionality

`_profitWhenToSetNoLossStopPips=10` We set stop loss in a breakeven after 10 pips

`_profitOfNoLossStopPips=0` we set breakeven stop loss the same as buy price (no profit)

`_trailingMethod=1` we want to trail with simple trailing

`_simpleSLTrailInitialStartPips=100` we start trail after 100 pips of profit

`_simpleSLTrailPips=20` we move SL level 20 pips far from the price

Other parameters are not used so leave them as is.

**Task (approaching trailing):** *I want to start trail with 100 pips and when the order profit increases by 25 pips I want to change trail by 5 pips until SL is 25 pips. For example: I buy at 1.5000 at 1.5100 I want to start trail with 100 pips trailing stop. At 1.5125 I want to trail with 95 pips stop loss. At 1.5150 with 90 pips SL. And so on.*

Parameters:

**\_pipsMultiplier=10** *We are on 5 digits account*

**\_orderCommentToTrack=""** *we track all orders (empty)*

**\_enableBreakeven=false** *We don't need breakeven functionality*

**\_trailingMethod=7** *we want to trail with approaching trailing*

**\_approachingStartSLPips=100** *we start with 100 pips SL*

**\_approachingEndSLPips=25** *we end with 25 pips SL*

**\_approachingPriceStepPips=25** *when profit increases by 25 pips we decrease SL*

**\_approachingSLStepPips=5** *We decrease SL value by 5 pips*

Other parameters are not used so leave them as is.

## Help, Support & Questions

We are ready to answer all your questions on our forum at:

<http://forex-forum.landofcash.net>

you also can contact us via various ways listed on this page:

<http://www.landofcash.net/ForexTradingLOC-EASupport.aspx>

**We wish you big profits!**

**Thank You for reading.**

**LandOfCash.net Team.**